

PROJECT DETAILS

Date: _____

Bid Date: _____

Project Name: _____

City / State / Zip Code: _____

Architect / Engineer: _____

Wholesaler / Contractor: _____

Model #: _____ Gas Type (NG or LP): _____ Total System Btu/h: _____

Notes:

FEATURES AND BENEFITS

- Gas Type: Natural Gas (converts to Propane with parameter setting adjustment)
- Installation Type: Indoor (converts to outdoor installation with parameter setting adjustment and Versa-Vent™ outdoor vent cap) (sold separately)
- High Altitude Approved: Up to 10,200 ft (3,109 m)
- Water Flow Control: Water Flow Sensor, Electronic Water Control and Bypass Control
- Controller:
 - Standard: Integrated Controller
 - Optional: MC-601 Controller
- Certifications: AHRI, ANSI Z21.10.3, CSA 4.3, and ENERGY STAR®
- Safety Devices: Flame Failure - Flame Rod, Boiling Protection, Combustion Fan RPM Check, Over Current - Glass Fuse, Remaining Flame (OHS) and Automatic Frost Protection
- Complies with South Coast Air Quality Management District 14 ng/J or 20 ppm NOx Emission Levels
- Ultra Low NOx
- 1/2 in. (13 mm) Gas Line Compatible
- Tankless Rack System (TRS) Compatible

- Flexible Venting Options:
 - Concentric or Schedule 40 PVC/CPVC
 - Direct Vent (Concentric and Twin Pipe)
 - Non-Direct Vent (Room Air)
 - Common Vent (Direct Vent and Room Air). Vent lengths up to 150 ft (46 m) with eight Tankless Water Heater units.
- Ease of Installation and Serviceability:
 - Compact Design to Save Space
 - Wi-Fi Technology for Remote Monitoring and Management
 - Sliding Mounting Bracket for Easy Installation
 - Simple Gas Conversion

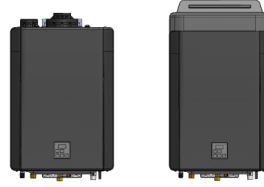


CERTIFIED TO ANSI Z21.10.3 — CSA 4.3

WATER HEATER SELECTION

CX199

Item	Qty	Model Number ¹	Gas Type ²	Interior/ Exterior ³
		CX199iN	Natural Gas or Propane	Interior or Exterior



CU160

Item	Qty	Model Number ¹	Gas Type ²	Interior/ Exterior ³
		CX160iN	Natural Gas or Propane	Interior or Exterior



¹ Model Numbers Explained:

CX 199 i N	
CX	Water Heater Model: CX Series (CX199)
199	Maximum Gas Consumption: <ul style="list-style-type: none"> • 199: 199,000 Btu/h • 160: 160,000 Btu/h
i	Installation Type: i (Interior) Converts to an outdoor installation with parameter setting adjustment and the Versa-Vent™ outdoor vent cap (sold separately).
N	Gas Type: N (Natural Gas) Converts to Propane with parameter setting adjustment.

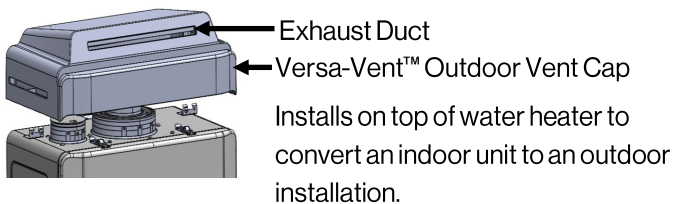
² Water heater model (CX199iN and CX160iN) factory default is Natural Gas, but converts to Propane with parameter setting adjustment.

³ Water heater model (CX199iN and CX160iN) factory default is Indoor, but converts to an outdoor installation with parameter setting adjustment and the Versa-Vent™ outdoor vent cap (sold separately).

OPTIONAL ACCESSORIES

Versa-Vent™ Outdoor Vent Cap (part # RXOVC)

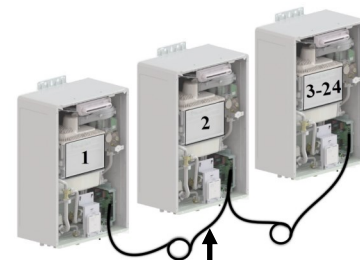
Outdoor vent cap that converts an indoor tankless water heater (applicable models) to an outdoor installation.



Cascade Cable (Electronic Connection Cable)

- The Rinnai Cascade Cable electronically connects water heaters. This connection rotates water heater operation order to ensure equal usage among the entire system and enables all water heaters connected to modulate operation and function as one hot water source.
- The cables connect to the PC Board inside each water heater.

For configurations with 2 through 24 water heaters.



- Available Lengths: 10 ft or 26 ft (3 m or 8 m)
- One cable required for each water heater

SPECIFICATIONS

		CX Models	
		CX199i	CX160i
Minimum Gas Consumption Btu/h		15,000	
Maximum Gas Consumption Btu/h		199,000	160,000
Flow Rate ¹ (Min-Max)		0.26-11.1 GPM (1.0-42 L/min)	0.26-9.0 GPM (1.0-34 L/min)
Max Flow Rate with Parameter Adjustment		11.1 GPM (42 L/min)	9.0 GPM (34 L/min)
Weight		55 lb (25 kg)	54 lb (24 kg)
Sound Level		49 dB	48 dB
Electrical Data	Normal	98 W	73 W
	Standby	1.3 W	
	Freeze Protection	142 W	
	Max Current	4 Amps	
	Fuse	10 Amps	
Temperature Setting		Minimum 98°F (37°C) Maximum: Default: 140°F (60°C) With Parameter Adjustment: 185°F (85°C)	
Bypass Flow Control		Electronic	
Gas Supply Pressure ²	Natural	3.5 in. wc - 10.5 in. wc	
	Propane	8.0 in. wc - 13.5 in. wc	
Type of Appliance		Super-High-Efficiency (Condensing), Tankless, Temperature Controller Continuous Flow Gas Hot Water System	
Ignition System		Direct Electronic Ignition	
Electric Connections		Appliance: AC 120 Volts, 60Hz Temperature Controller: DC 12 Volts (Digital)	
Water Supply Pressure		Minimum: 15 PSI (Recommended 50 PSI for maximum performance) Maximum: 150 PSI	
Remote Control Cable		Non-Polarized Two Core Cable (Minimum 22 AWG)	
ENERGY STAR® Qualified		Yes	
Complies with South Coast Air Quality Management District 14 ng/J or 20 ppm NOx emission levels		Yes	

¹ Minimum flow may vary slightly depending on the temperature setting and the inlet water temperature. Minimum activation flow is 0.26 GPM (0.98 L/min).

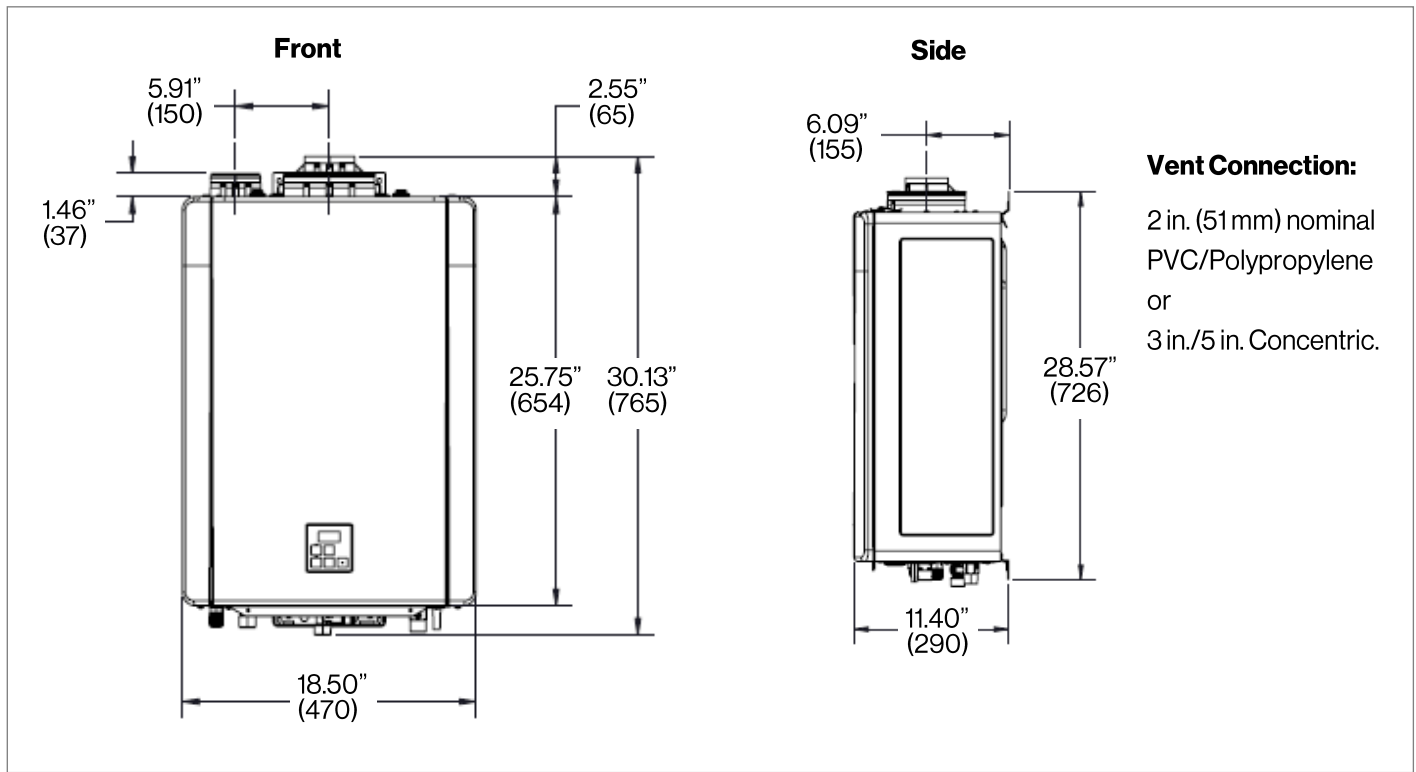
² The maximum gas supply pressure must not exceed the value specified by the manufacturer.

Rinnai products are continually being updated and improved; therefore, specifications are subject to change without prior notice.

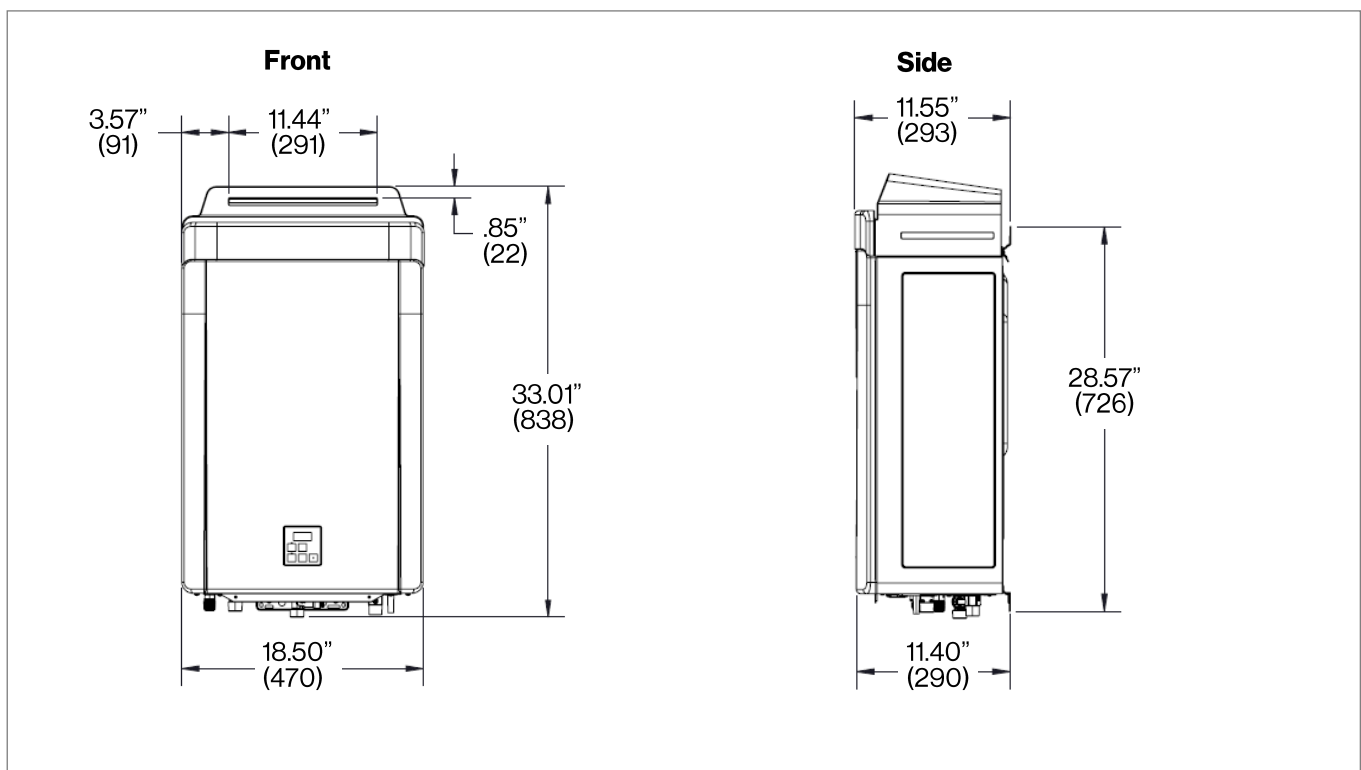
DIMENSIONS

Inches (mm)

CX MODELS:



WITH EXTERNAL VENT CAP:



PROJECT NOTES

CONTACT INFORMATION

Rinnai Commercial Water Heating Services

800-621-9419

commercialservices@rinnai.us

